



**AMERICAN SAMOA COMMUNITY
COLLEGE**
Health and Human Services

Action Plan 2015-2016

DIVISION OF ACADEMIC AFFAIRS

HEALTH AND HUMAN SERVICES

Department of Health and Human Services SLO Assessment 2014-2016 Action Plan for Health Science Prepared by Dr. Daniel Chang

Health Science	PLO1 Demonstrate the basic knowledge and skills required for a variety of health related careers.	PLO 2 Analyze medical terminology, theory, ethics, laws, and concepts to the practice in the field of health careers.	PLO 3 Assess personal, family, and community wellness and improve in healthy living lifestyle.	PLO 4 Demonstrate knowledge and skills through fieldwork from a health related agency.	PLO 5 Demonstrate life-saving skills in American Heart Association or American Red Cross certified CPR
HEA 140 Introduction to Health Occupations	Fall 2014 and Spring 2015 CLO 3	Fall 2014 Spring 2015 CLO 1 CLO 2			
HEA 150 Introduction to Health Science			Fall 2014 and Spring 2015 CLO 2		
HEA 151 Medical Terminology	Fall 2014 and Spring 2015 CLO 3	Fall 2014 Spring 2015 CLO 1 CLO 2			
HEA 152 Standard First Aid and CPR	Fall 2014 and Spring 2015 CLO 3				Fall 2014 and Spring 2015 CLO 1 CLO 2
HEA 299 Health Science Practicum/Work Experience	Fall 2014 and Spring 2015 CLO 4	Fall 2014 and Spring 2015 CLO 3		Fall 2014 and Spring 2015 CLO 1 CLO 2	
PH 100 Community Health Education	Spring 2015 CLO 1	Spring 2015 CLO 2 CLO 4	Spring 2015 CLO 3		
PH 101 Dental Health			Fall 2014 Not collected		
PH 102 Essential Public Health Functions and Primary Health Care			Fall 2015 Pending data		
PH 103 Introduction to Informational Systems for Health Managers			Spring 2016 Pending data		
HEA 250 Introduction to Developmental Disabilities	Fall 2014 Not collected			Fall 2014 Not collected	

Table 1: Alignment of CLO to PLO for health science and public health courses
Please note this is the first time public health courses are being offered (Fall 2014).

Assessment data and results in percentage and graph by each course for comparison between Fall 2014 and Spring 2015 and then comparing to the overall average of both

semester for health science course in setting the program standard indicator the next assessment cycle:

Fall 2014 Spring 2015 HEA 140

Chart 1: CLO 1- Synthesize the learned concepts and to demonstrate the ability to analyze and resolved problems in health related career. PLO 2- Analyze medical terminology, theory, ethics, laws, and concepts to the practice in the field of health careers. Instrument: Test

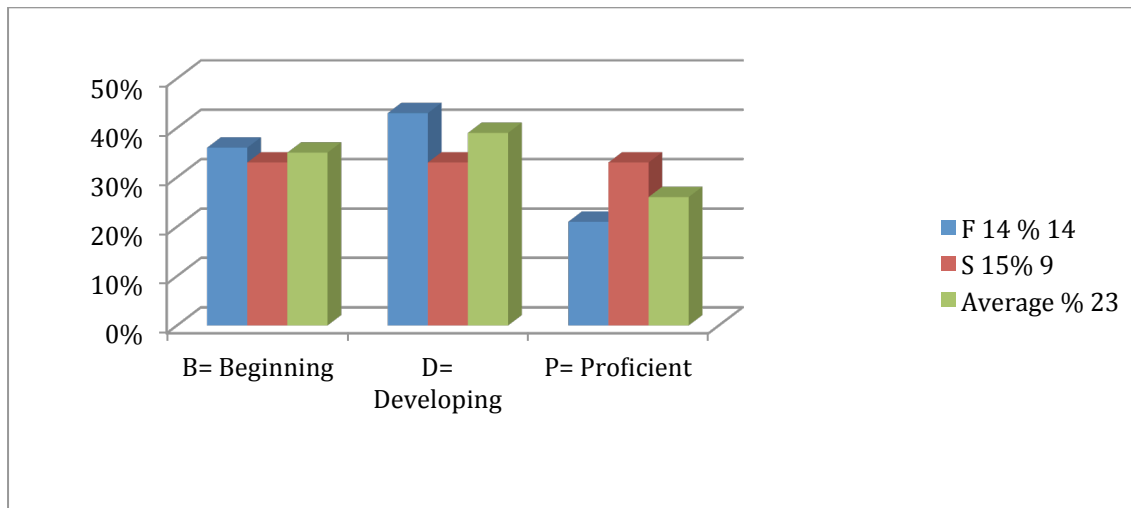


Chart 2: CLO 2- Compare and contrast the different requirements for health care careers. PLO 2- Analyze medical terminology, theory, ethics, laws, and concepts to the practice in the field of health careers. Instrument: Oral Presentation and Rubric

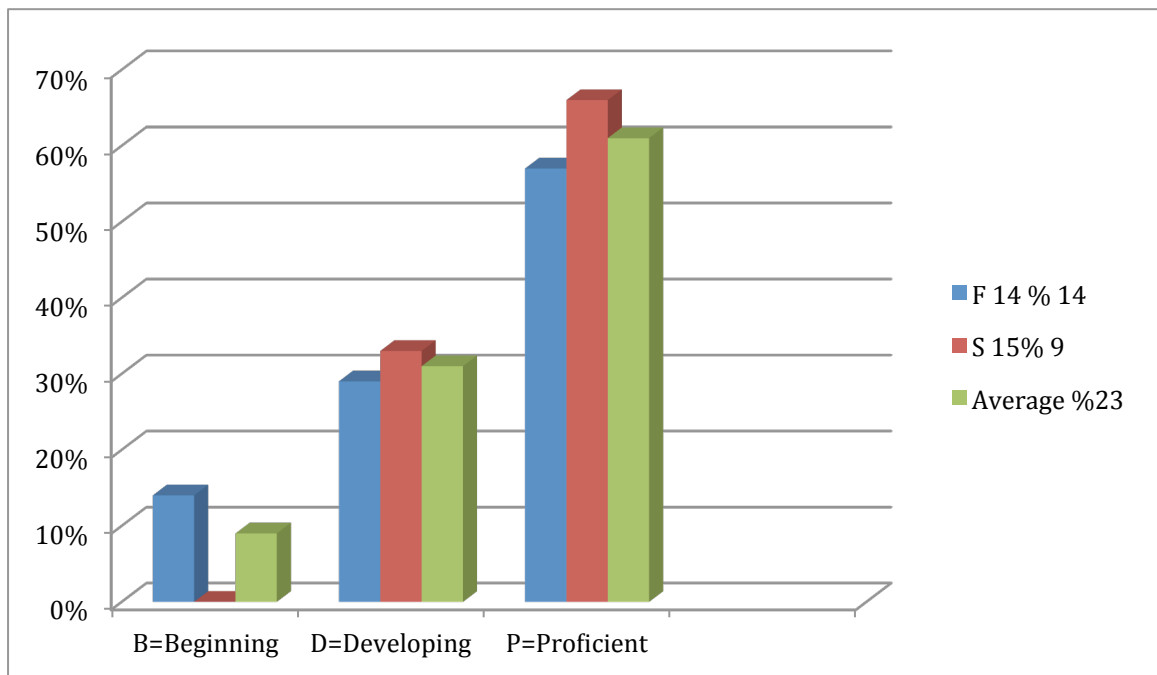
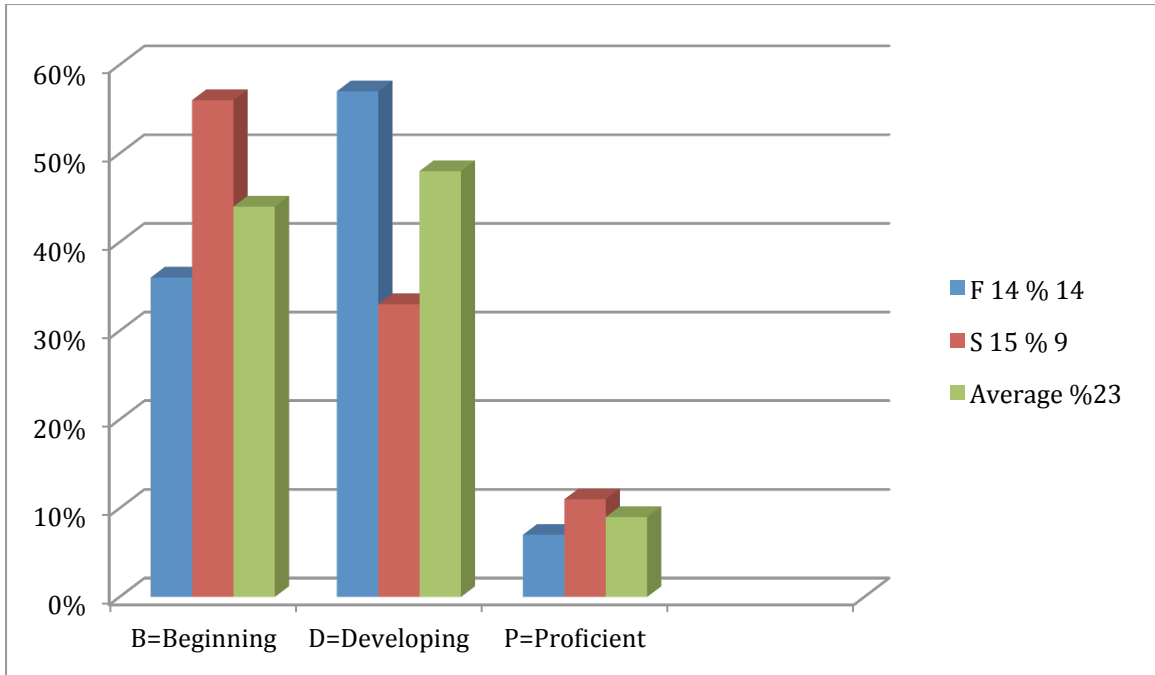


Chart 3: CLO 3- Demonstrate important work qualities (promptness, dependability, initiative, etc.) PLO 1- Demonstrate the basic knowledge and skills required for a variety of health related careers. Instrument: Attendance Log and Rubric.



Fall 2014 and Spring 2015 HEA 151

Chart 4: CLO 1- Analyze the different components of a medical term and interpret the meaning of the word. . PLO 2- Analyze medical terminology, theory, ethics, laws, and concepts to the practice in the field of health careers. Instrument: Test

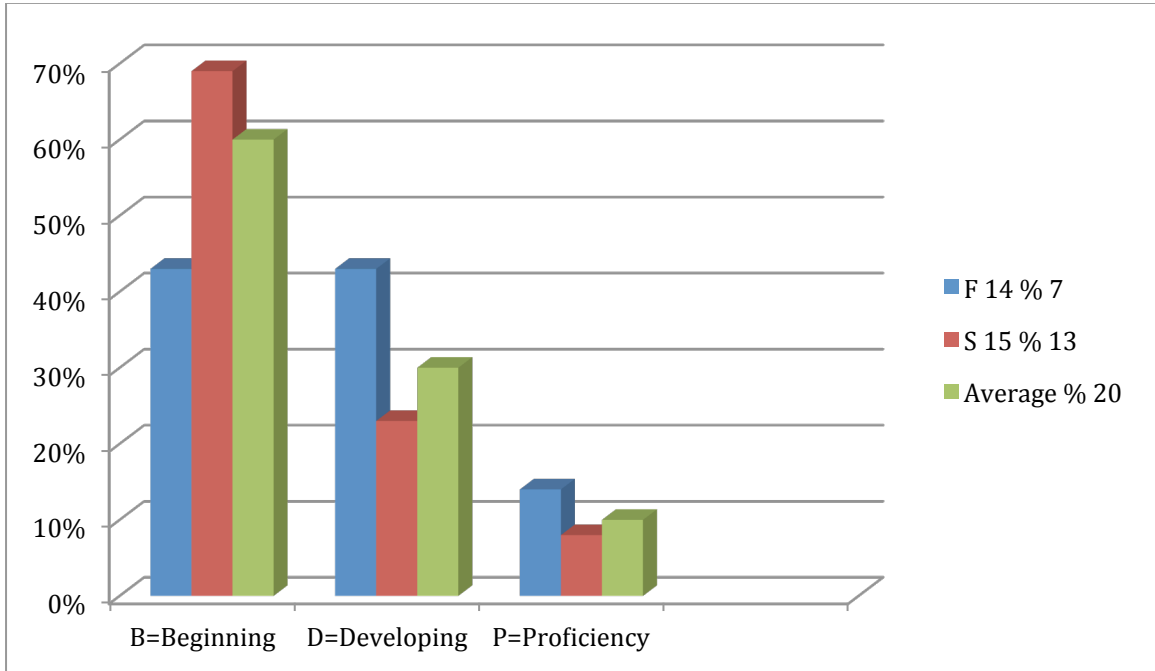


Chart 5: CLO 2- Interpret the summary of a case study/medical record. PLO 2- Analyze medical terminology, theory, ethics, laws, and concepts to the practice in the field of health careers. Instrument: Oral Presentation and Rubric

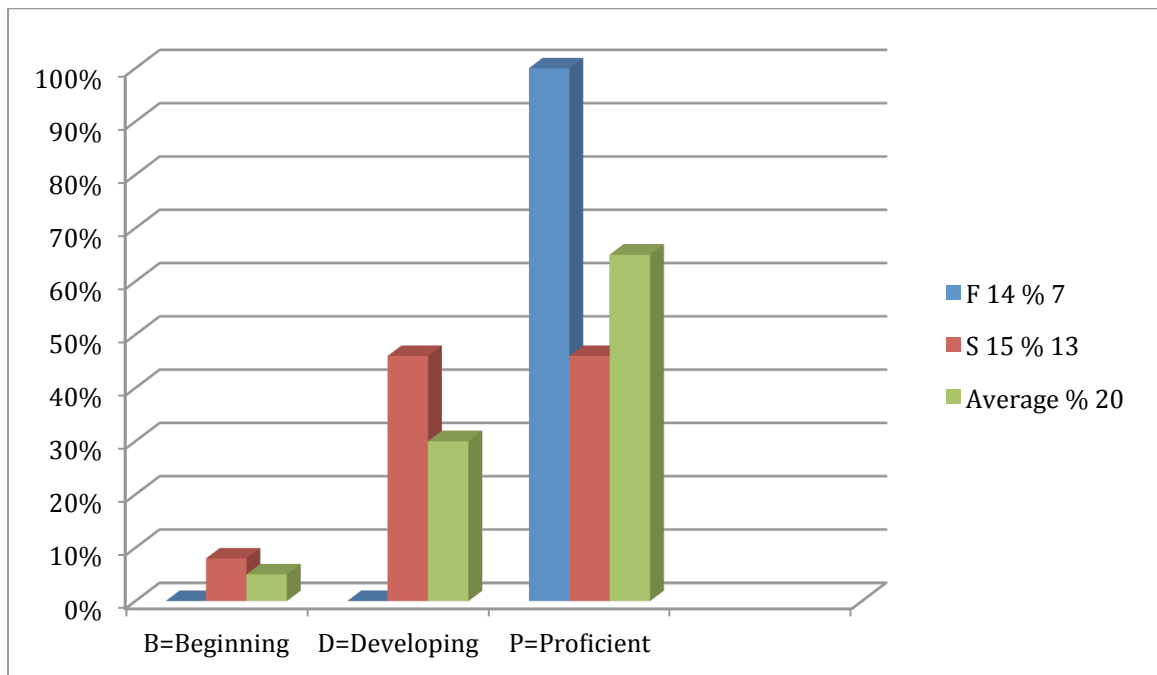
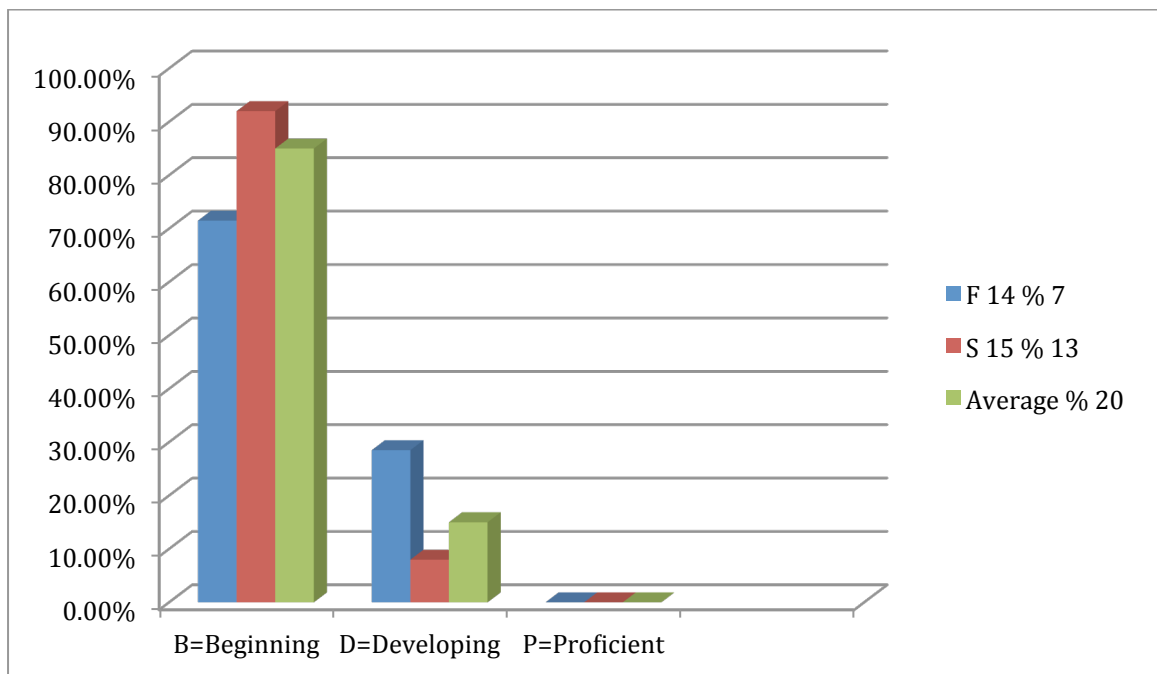


Chart 6: CLO 3- Demonstrate important work qualities (promptness, dependability, initiative, etc.) PLO 1- Demonstrate the basic knowledge and skills required for a variety of health related careers. Instrument: Attendance Log and Rubric



Fall 2014 and Spring 2015 HEA 152

Chart 7: CLO 1- Demonstrate CPR and First Aid on Manikins. CLO 2- Analyze the learned concepts and be able to apply it to an emergency situation. PLO 5- Demonstrate life-saving skills in American Heart Association or American Red Cross certified CPR. Instrument: AHA Pass-off sheet

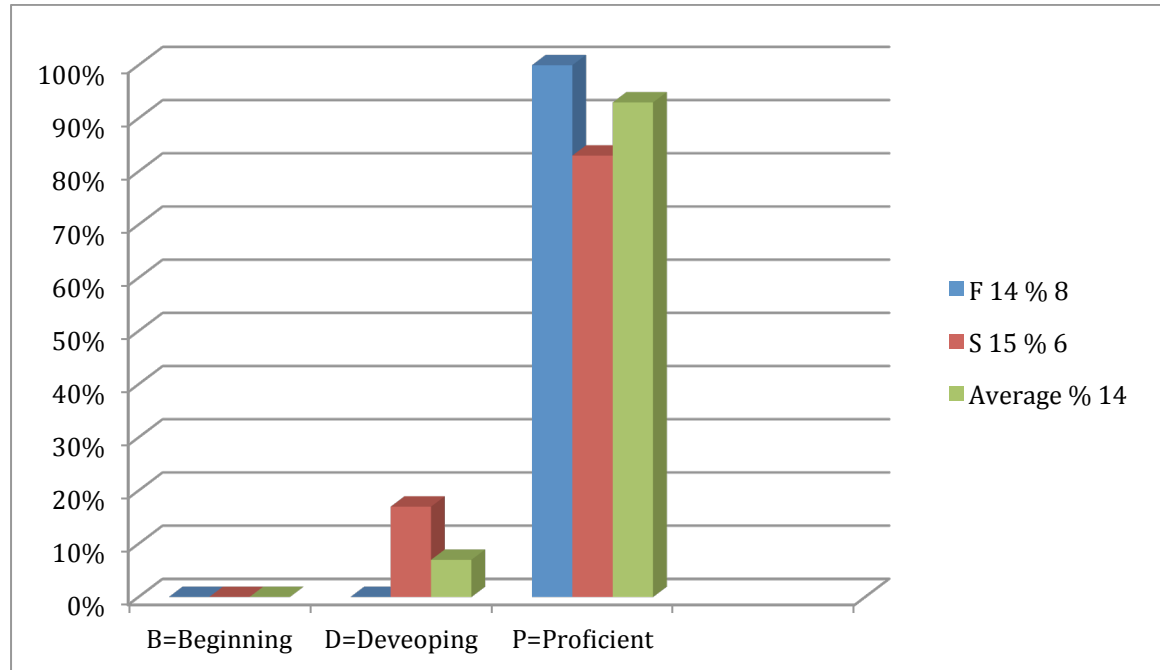
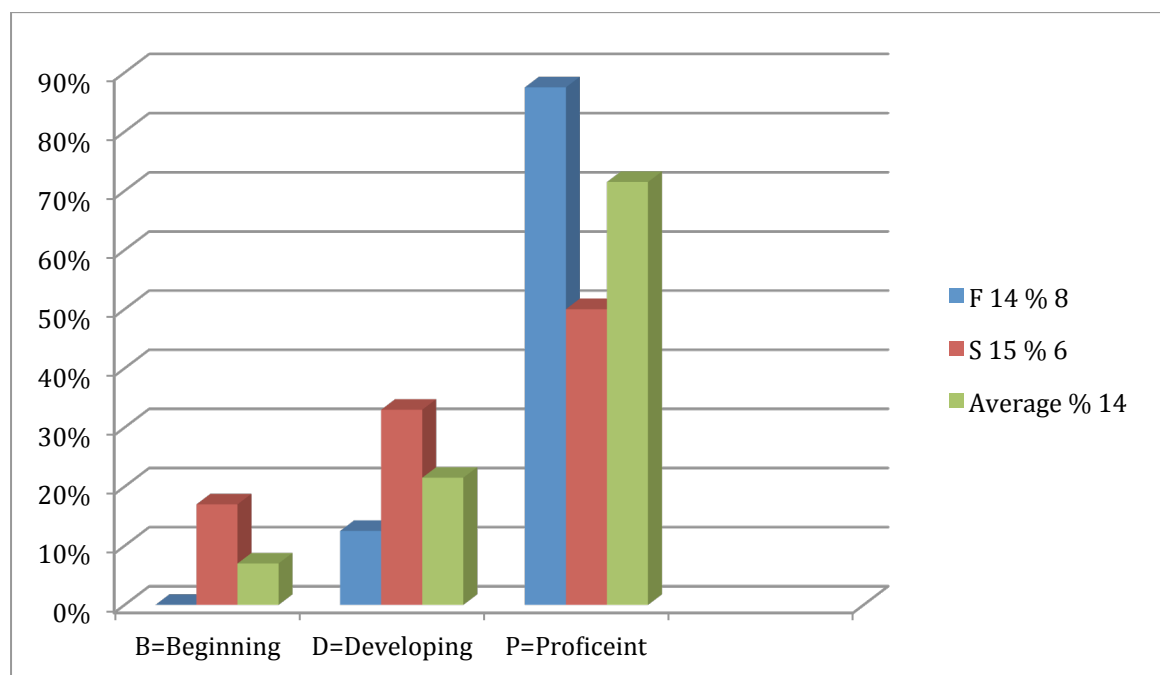


Chart 9: CLO 3- Demonstrate important work qualities (promptness, dependability, and initiatives, etc.). PLO 1- Demonstrate the basic knowledge and skills required for a variety of health related careers. Instrument: Attendance Log and Rubric



Fall 2014 and Spring 2015 HEA 299

Chart 10: CLO 1- Apply and practice the clinical skills learned from previous health course. PLO 4- Demonstrate knowledge and skills through fieldwork from a health related agency. Instrument: Clinical evaluation and Rubric

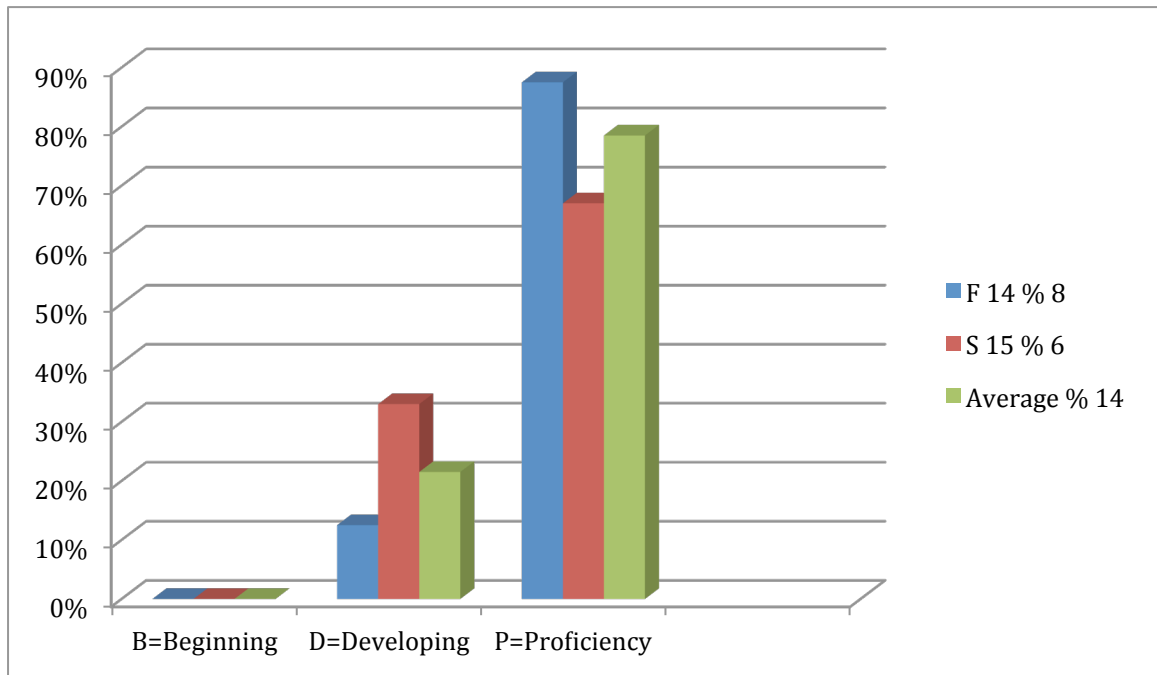


Chart 11: CLO 2- Develop insights into work experiences and apply them to personal, psychological, occupational and social relationship. PLO 4- Demonstrate knowledge and skills through fieldwork from a health related agency. Instrument: Work Journals and Rubric

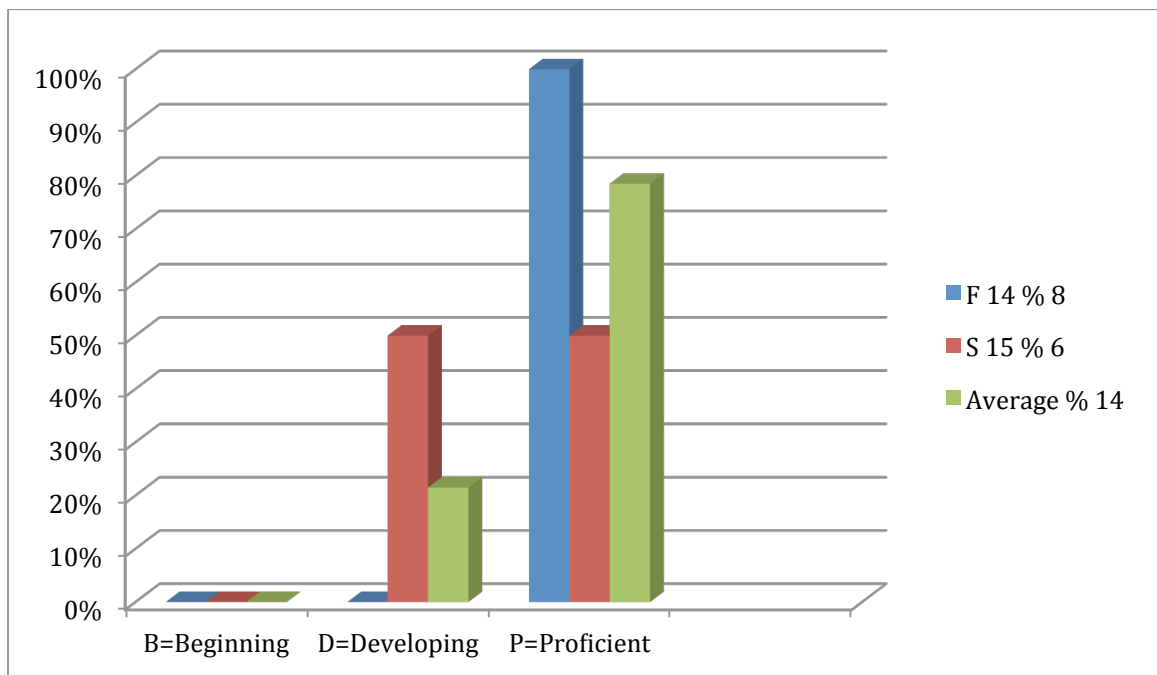


Chart 12: CLO 3- Develop further a professional interest in the field of health care services and sharing these experiences with others in and out of the class. PLO 1- Demonstrate the basic knowledge and skills required for a variety of health related careers. Instrument: Oral Presentation and Rubric

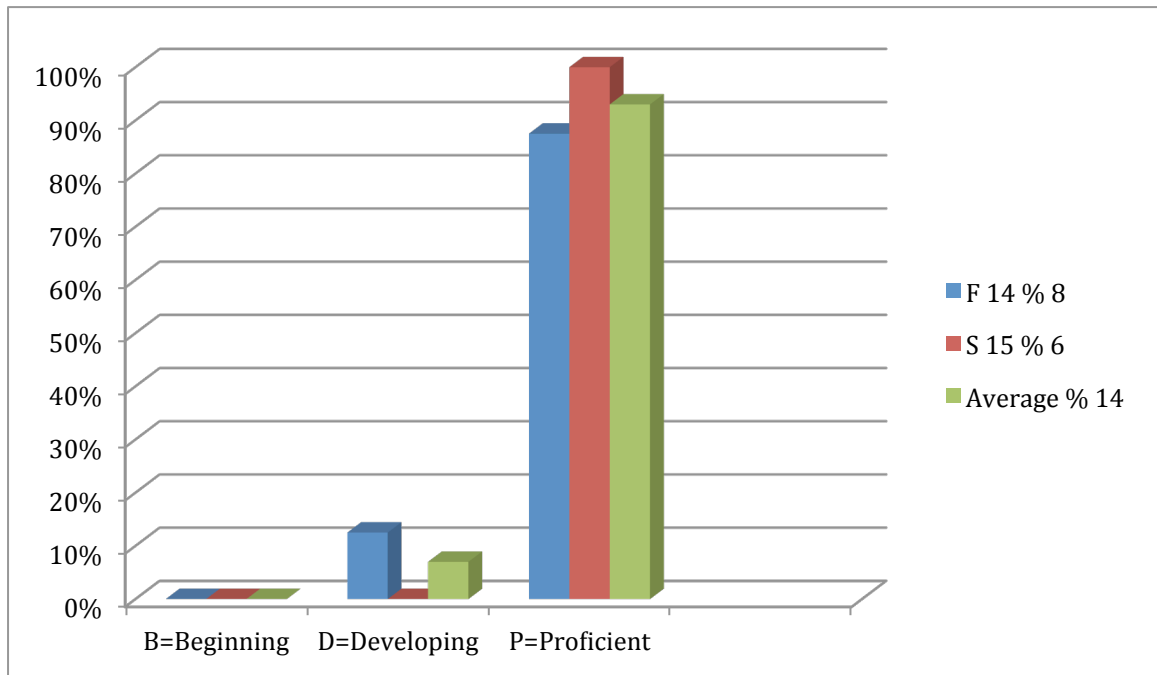


Chart 13: CLO 4- Demonstrate important work qualities (promptness, dependability, and initiatives, etc.). PLO 1- Demonstrate the basic knowledge and skills required for a variety of health related careers. Instrument: Attendance Log and Rubric

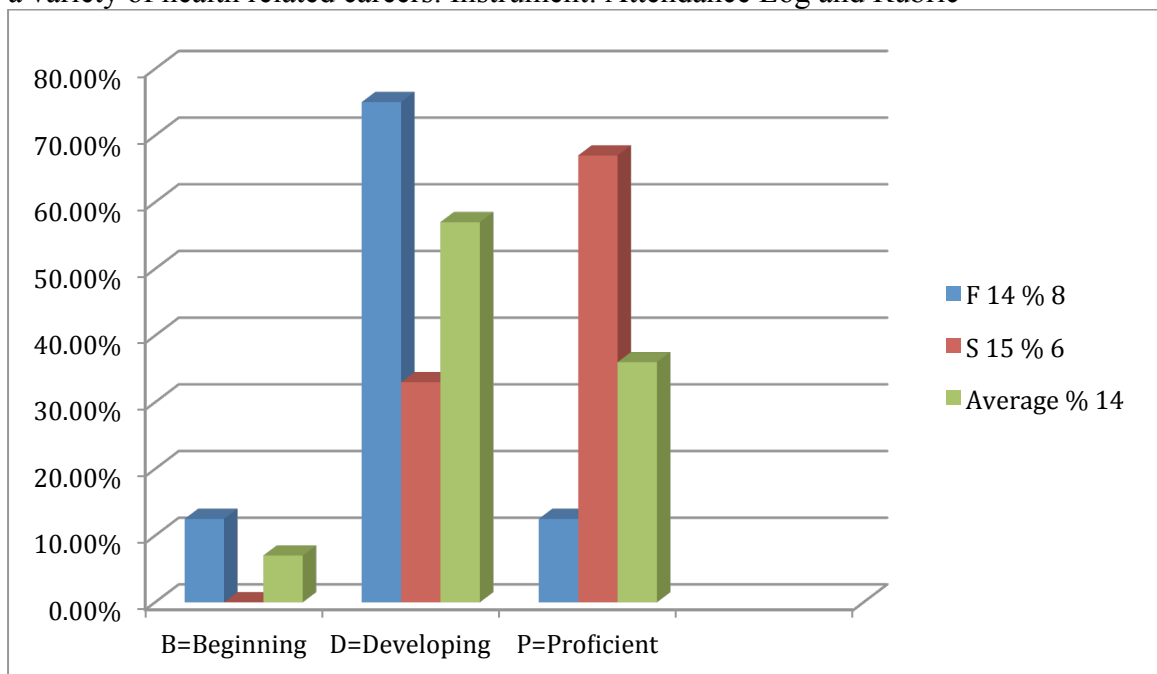


Table 2: Summary of Assessment Data by Course Learning Outcomes:

	# Students	% B CLO 1	%D CLO 1	%P CLO 1	%B CLO 2	%D CLO 2	%P CLO 2	%B CLO 3	%D CLO 3	%P CLO 3	%B CLO 4	%D CLO 4	%P CLO 4
HEA 140 F 14	14	36 (5)	43 (6)	21 (3)	14 (2)	29 (4)	57 (8)	36 (5)	57 (8)	7 (1)			
S 15	9	33 (3)	33 (3)	33 (3)	0	33 (3)	66 (6)	56 (5)	33 (3)	11 (1)			
Average	23	35 (8)	39 (9)	26 (6)	9 (2)	31 (7)	61 (14)	44 (10)	48 (11)	9 (2)			
HEA 151 F 14	7	43 (3)	43 (3)	14 (1)	0 (0)	0 (0)	100 (7)	71.5 (5)	28.5 (2)	0 (0)			
S 15	13	69 (9)	23 (3)	8 (1)	8 (1)	46 (6)	46 (6)	92 (12)	8 (1)	0			
Average	20	60 (12)	30 (6)	10 (2)	5 (1)	30 (6)	65 (13)	85 (17)	15 (3)	0			
HEA 152 F 14	8	0	0	100 (8)	0	0	100 (8)	0	12.5 (1)	87.5 (7)			
S 15	6	0	17 (1)	83 (5)	0	17 (1)	83 (5)	17 (1)	33 (2)	50 (3)			
Average	14	0	7 (1)	93 (13)	0	7 (1)	93 (13)	7 (1)	21.5 (3)	71.5 (10)			
HEA 299 F 14	8	0	12.5 (1)	87.5 (7)	0	0	100 (8)	0	12.5 (1)	87.5 (7)	12.5 (1)	75 (6)	12.5 (1)
S 15	6	0	33 (2)	67 (6)	0	50 (3)	50 (3)	0	0	100 (6)	0	33 (2)	67 (4)
Average	14	0	21.5 (3)	78.5 (11)	0	21.5 (3)	78.5 (11)	0	7 (1)	93 (13)	7 (1)	57 (8)	36 (5)
PH 100 S 15	6	67 (4)	33 (2)	0	17 (1)	83 (5)	0	17 (1)	83 (5)	0	0	17 (1)	83 (5)
HEA 150 F 14	25	0	28 (7)	72 (18)	4 (1)	24 (6)	72 (18)						
S 15	26	0	4 (1)	96 (25)	0	12 (3)	88 (23)						
Average	51	0	16 (8)	84 (43)	2 (1)	18 (9)	80 (41)						

Table 3: Summary of assessment data by Program Learning Outcome:

	HEA 140	HEA 150	HEA 151	HEA 152	HEA 299	PH 100	total	Percent
PLO 1 Attendance	2/23		0/20	10/14	5/14	0/6	17/77	22
PLO 2 Test	6/23		2/20			0/6	8/49	16
PLO 2 Oral Presentation	14/23		13/20		13/14	5/6	45/63	72
PLO 3 Health Journal, oral presentation, Quizzes		42/51				0/6	42/57	74
PLO 4 Clinical evaluation					11/14		11/14	79
PLO 5 AHA Pass-				13/14			13/14	93

off								
-----	--	--	--	--	--	--	--	--

Discussion of Assessment Result

Program Learning Outcome Set Standard Indicator for Proficiency Level

PLO 1- Demonstrate the basic knowledge and skills required for a variety of health related careers.

- 17 out of 77 students from HEA 140, HEA 151, HEA 152, HEA 299, and PH 100 assessed to be at proficient level based on attendance record and time sheet from LBJ practicum course which is equivalent to be **22%**.

PLO 2- Analyze medical terminology, theory, ethics, laws, and concepts to the practice in the field of health careers.

- Two instruments and course learning outcomes were used in assessing this program outcome:
- 8 out of 49 students from HEA 140, HEA 151, and PH 100 assessed to be at proficient level based on test/exam which is equivalent to **16%**.
- 45 out of 63 students from HEA 140, HEA 151, HEA 299, and PH 100 assessed to be at proficient level based on oral presentation which is equivalent to **72%**.

PLO 4- Demonstrate knowledge and skills through fieldwork from a health related agency.

- 11 out of 14 students from HEA 299 assessed to be at proficient level based on clinical evaluation and work journal which is equivalent to **79%**.

PLO 5- Demonstrate life-saving skills in American Heart Association or American Red Cross certified CPR.

- 13 out of 14 students from HEA 152 assessed to be at proficient level based on American Heart Association pass-off sheet which is equivalent to **93%**.

Please note: HEA 150 is currently cross-referenced as a GE course, which along with new PH courses are used in assessing PLO 3.

PLO 3- Assess personal, family, and community wellness and improve in healthy living lifestyle.

- 42 out of 57 students from HEA 150 and PH 100 assessed to be at proficient level based on health journals, oral presentation, and quizzes which is equivalent to **74%**.

In conclusion, our department will use this preliminary program set standard for comparison purpose for future assessment data.